



Shown with option P50344 and lever spray bar option

TR 575 HEATED ASPHALT DISTRIBUTOR

HEAT AND SPRAY ASPHALT EMULSIONS, CUTBACKS, REJUVENATORS, PRIMERS & MORE

TR 575 Features:

- 575 gallon capacity
- Electric brakes with safety break-away system
- Easy access basket strainer reduces tip clogging
- Positive displacement material pump
- 5-gallon diesel wash down system
- 300,000 BTU vapor heat system with safety shut-off
- Lock down lid with breather vent
- 50-ft. hose and spray wand
- Requires LP gas cylinder - Not included



PRODUCT #	DESCRIPTION	WEIGHT
E2260	TR 575 - Heated Asphalt Distributor	3,000 lbs.
Optional Features:		
P50246M	Manual Spray Bar (includes seat and mounting components) - 10 ft spray width	
P50247L	Lever - Manual Spray Bar	
P50344	2" Pump - Hydraulic Drive w Honda GX240	
P50346	Overnight Heater Kit - Double	
E9000	Blocking / Bracing Charge (if required)	400 lbs.

* Call for pricing | Components subject to change

SPECIFICATIONS:

Height	73"
Width	75"
Length	204"
Weight	3,000 lbs.
Tongue Weight Empty	300 lbs.
Axle	2 - 6,000 lbs.
Engine	Honda GX160
Burner System	300,000 BTU vapor heat system with safety shut off
Material Pump	Positive displacement with pressure relief valve 15 GPM

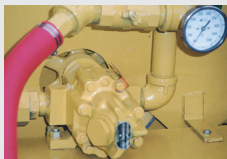
STANDARD FEATURES:



Electric Brakes with Safety Break-Away System



Easy Access Basket Strainer Reduces Tip Clogging



Positive Displacement Material Pump



5 Gallon Diesel Wash Down System



300,000 BTU Vapor Heat System with Safety Shut-Off



Lock down lid with breather vent