

**SEALMASTER™
SANDPUP™ TRAILER
& SKID UNIT**
PERFORMANCE
& ECONOMY



SANDPUP™ TR 300
300-GALLON UNIT



SANDPUP™ SK 300
300-GALLON UNIT

**SANDPUP™ TRAILER
& SKID UNIT**

THE ECONOMICAL WAY TO TRANSPORT
AND APPLY PAVEMENT SEALERS WITH SAND

DESIGNED TO MIX AND APPLY PAVEMENT SEALERS
WITH OR WITHOUT SAND

SandPup Trailer & Skid Unit Features:

- Air Driven Dual Diaphragm Pump with Basket Strainer
- Hide-Away Spray Wand Holder (trailer unit only)
- Hose Reel with 75-Foot Hose
- Safety Break-Away Braking System (trailer unit only)
- Hydraulically-Driven Full Sweep Agitation

PRODUCT #	DESCRIPTION	WEIGHT
E1160	SandPup TR 300 Tank Trailer	1,920 lbs.
E1380	SandPup Skid Tank - Fits 8-foot beds only. Check weight capacity of your truck. The tank is mounted sideways and sits forward of the truck axle.	1,400 lbs.
Optional Features:		
T1145	Brush Water Box 40"	
P50402B	14-Gallon Poly Water Tank for TR 300	

* Call for pricing | Components subject to change

**OPTIONAL
FEATURES:**



Brush / Squeegee
Water Box

SPECIFICATIONS:

	TR 300	SK 300
Height	68"	52"
Width	67"	57"
Length	156"	85"

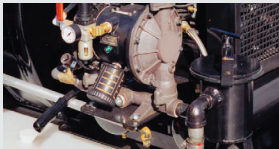
**STANDARD
FEATURES:**



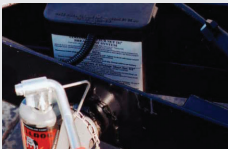
Hose Reel with
75-foot Hose



Hide-Away Spray
Wand Holder
(SandPup Trailer)



Air Driven Dual Diaphragm
Pump with Basket Strainer



Safety Break-Away
Braking System
(SandPup Trailer)



Hydraulically
Driven Full Sweep
Agitation