

CRACK PRO[®] MASTIC MACHINE

300-GALLON CAPACITY

ENGINEERED FOR EFFICIENCY & SAFETY

Crack Pro Mastic Machine Features:

- **Diesel** engine and heating system. No propane required.*
- **Oil-jacketed kettle with fast heat-up time** (Approximately 2.5 hours from a cold start).
- **Plow-point agitation** for faster heat-up, with forced material discharge.
- Agitation system provides **unmatched power / torque with safety interlocks** to protect the operator and prevent damage to the machine.
- Hydraulic system is **highly efficient and designed to run cool** (lowering maintenance costs), providing power to the torque-mounted, planetary agitation drive system.
- The waterproof steel control cabinet houses the **Crack Pro brand's proven control system.**
 - Burner temperature controllers with improved material temperature accuracy
 - Safety interlocks
 - Forward / reverse agitation switch
 - Work and strobe lights
- Heavy duty, 6-inch adjustable knife discharge valve to cut through the mastic aggregate.
- Heated **discharge chute stays hot without propane or hot oil** and will not catch on fire when idle. The chute is easily removed for use with wheeled and hand-held applicators.
- **Pail-warmer** melts material from metal pails used in application.
- **Large tool heater box** utilizes a diesel-fired burner with automatic shutoff to prevent overheating tools and wasting fuel.
- Adjustable pintle eye to match hitch height, tandem axle, for good, stable towing and operation. Complete with **battery powered break-away and LED light packages.**
- **Low-cost operation** with highly efficient heating and low-horsepower requirements.
 - The 30-gallon fuel tank allows **15 to 25 hours of operation between fill-ups.**
- **Overnight heaters** allow for quicker application the next day.
- **Maintenance is a breeze** with a 600-degree-rated bearing on the rear and a packing gland with internal grease ports for direct lubrication into the gland on the front. This machine was built with maintenance in mind and easy access to all components that require periodic service. (burners, packing glands, grease Zerks, engine, and drive system).

*A propane torch is available to assist in heating and cleaning application equipment, and to supplement heating the chute and valve during cold weather application.



SPECIFICATIONS:

Tank Capacity	300 gallon
Heat Transfer Oil	42 gallons
Max. BTU Input	372,000
Construction	Oil Jacket
Temp. Control	Digital
Tank Opening Material	16" x 24"
Tank Opening Pail Heat	16" x 16" x 16"
Insulation	1.5"
Agitation Forward Reverse	Plow-point forced discharge
Heating System	Diesel burner
Power Unit Diesel	Kubota D 602
Tandem Axle Suspension	6,000 lb. axles
Loading Height	60"
Overall Height with Light Kit	108"
Width	82"
Length	212"

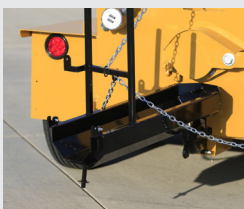
PRODUCT #	DESCRIPTION	WEIGHT
E2776	300 Gallon	5,860 lbs.
PE2680	Arrowboard	
P92000C433_10	10" Drag Box	
P92000C433_12	12" Drag Box	
P92000C433_18	18" Drag Box	
P92000C433_24	24" Drag Box	
E2860	Wheeled Applicator	

* Call for pricing | Components subject to change

STANDARD FEATURES:



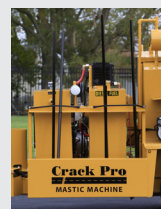
Diesel Tool Box Heater



Heated Adjustable Locking Chute



Control Box



Tool Rack



Internally lubricated packing gland with drip catch pan

CRACKMASTER MASTIC

The ideal product for large cracks, bridge joints, plug joints, manhole cover areas, utility joints and more.

SEE PAGE 22



300 GALLON CRACK PRO MASTIC MACHINE

Machine comes standard with a Chute Extension that adds approximately 12" to the chute, allowing material to be dispensed approximately 48" from the discharge valve.



Tool Rack includes 6 Tools: Chute Scraper, Chute Cleaner, 1/4" Flat Iron, 3/8" Flat Iron, V-Shaped Iron, and Box Iron



Full Light Kit with Work Area Lighting, Strobe Light, and optional Arrowboard



Pail Heater



Optional Mastic Drag Boxes available in 10", 12", 18", and 24"



Optional Wheeled Applicator