



**SealMaster®**

**Pavement Products & Equipment**

# SECTION 1

**CRACK PRO  
PUMP/AGITATOR**

**PUMP AND AGITATOR NOT WORKING**

1. Is the interlock light on?



Yes, continue to step 4.

No, continue to step 2.

---

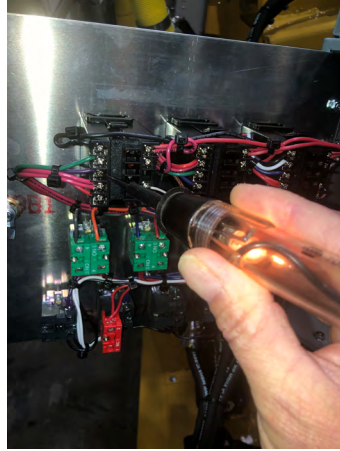
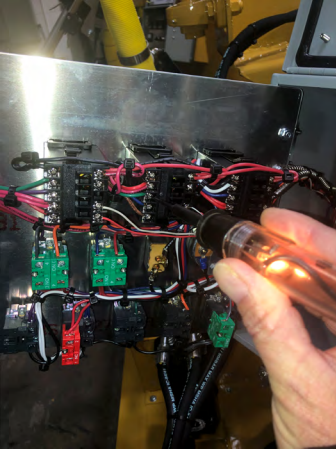
2. Are the material and hose PV temperatures at 250°?



Yes, continue to step 3.

No, wait for material and hose temperatures to reach 250°. See burner troubleshooting if burner is not heating properly.

3. Is there power at terminal 3 on the material and hose temperature controllers (TC2-3 and TC3-3)?



Yes, replace interlock light.

No, if there is no power on terminal 3 of one of the controllers, replace that particular temperature controller.


REPLACE TEMPERATURE CONTROLLER  
**CLICK HERE** 

4. Is there power at terminal 5 of CR-3?



Yes, continue to step 5.

No, replace CR-3 relay.

REPLACE CR3 RELAY  
**CLICK HERE** 

5. Is there magnetism on the top hydraulic control block solenoid when agitator forward is activated?



Yes, replace pressure compensator valve.

REPLACE PRESSURE  
COMPENSATOR VALVE  
**CLICK HERE**



No, contact Sealmaster for further troubleshooting. (800) 395-7325



**SealMaster®**

**Pavement Products & Equipment**

# SECTION 2

**CRACK PRO  
AGITATOR ONLY NOT WORKING**

**INTERLOCK IS ON**

1. Turn the red knob on the hydraulic manifold counter clockwise ½ a turn and check for agitation.



If this didn't work continue to step 2.

---

2. Do you have magnetism on the hydraulic control block solenoid when agitator FWD is activated?



Yes, continue to step 5.

No, continue to step 3.

3. Is there power on the middle connector of the door switch?

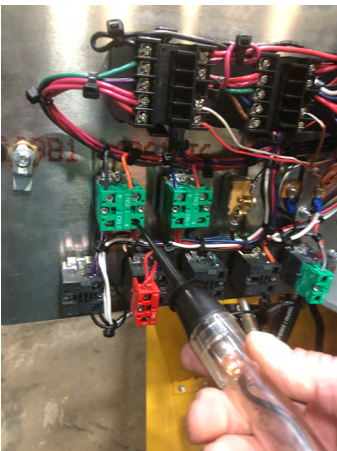


Yes, continue to step 4.

No, replace the door switch.

---

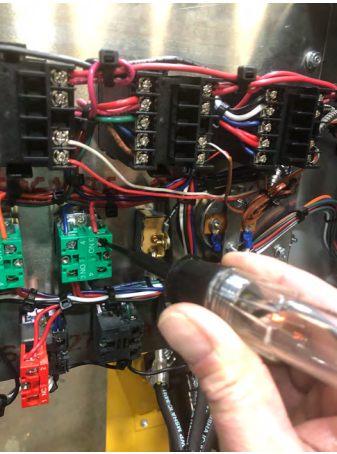
4. Is there power on the bottom right terminal of the agitation switch?



Yes, continue to step 5.

No, check wiring from door switch to bottom right terminal of agitator switch.

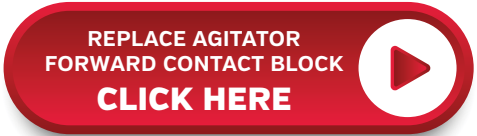
5. When agitator is switched to FWD, is there power on the top right terminal of switch?



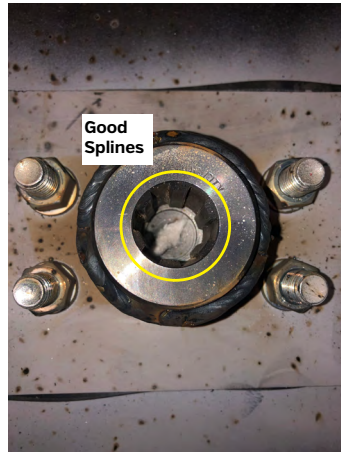
Yes, replace the agitator forward solenoid.



No, replace the agitator switch forward contact block.  
If the switch is not functioning properly, replace the switch as well.



6. Remove the agitation motor. Are the splines inside of coupler intact?



Yes, contact Sealmaster for troubleshooting. (800) 395-7325

No, replace the Agitator shaft.  
Contact Sealmaster for further troubleshooting.





**SealMaster®**

**Pavement Products & Equipment**

# SECTION 3

**CRACK PRO  
PUMP (ONLY) NOT WORKING EITHER DIRECTION**

**INTERLOCK IS ON**

1. Turn bottom red knob on hydraulic manifold counter clockwise until the pump begins turning.



If this does not solve this issue, contact Sealmaster for further troubleshooting.  
(800) 395-7325



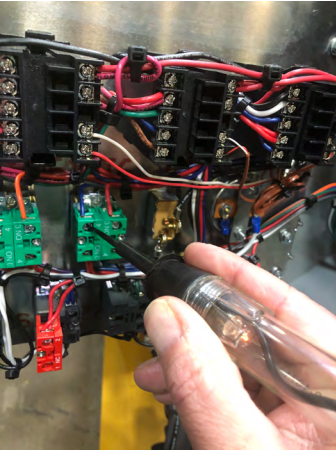
**SealMaster®**

**Pavement Products & Equipment**

# SECTION 4

**CRACK PRO  
PUMP REVERSE ONLY NOT WORKING  
INTERLOCK IS ON**

1. Switch the pump to REV. Is there power on the top left terminal of the pump switch?



Yes, continue to step 4.

No, replace the switch contact block.  
If the switch is not functioning properly,  
replace the switch as well.

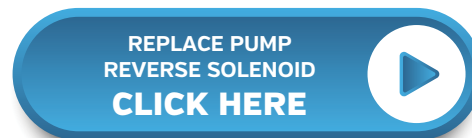


2. Is there magnetism on the hydraulic control block solenoid when pump REV Is activated?



Yes, contact Sealmaster for further support. (800) 395-7325

No, replace the reverse hydraulic manifold solenoid.





**SealMaster®**

**Pavement Products & Equipment**

# SECTION 5

**CRACK PRO  
PUMP FORWARD ONLY NOT WORKING  
INTERLOCK IS ON**

1. Pump FWD not working. Is there power on the top right terminal of the pump switch when pump trigger is pulled?



Yes, continue to step 2.

No, continue to step 4.

---

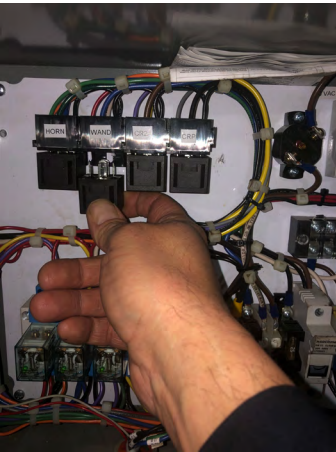
2. Is there magnetism on the hydraulic control block solenoid when pump switch is activated?



Yes, contact Sealmaster for further support. (800) 395-7325

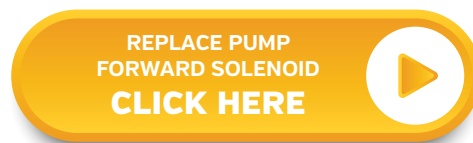
No, continue to step 3.

3. Swap the wand relay with the horn relay. Does the pump forward work now?



Yes, replace the relay.

No, replace the pump forward solenoid.



4. Is there power on 1 of the pump trigger black wires?



Yes, continue to step 5.

No, trace wiring back to the control box. Inspect harnesses and switch. Check for damage and fix. There may be wiring damage inside the hose. Contact Sealmaster for further assistance. [800] 395-7325

5. Is there power on both wires when trigger is pressed?



Yes, trace wiring back to the control box. Check for damage and fix.  
Contact Sealmaster for further assistance. [800] 395-7325

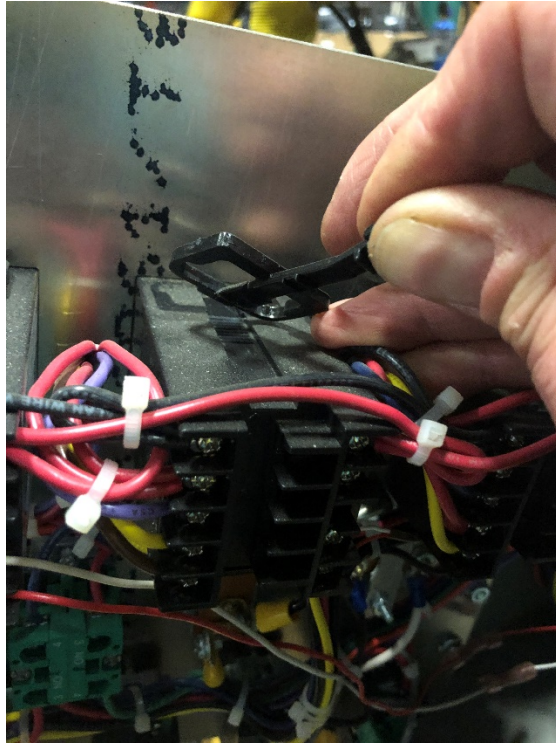
No, replace the trigger switch.

---



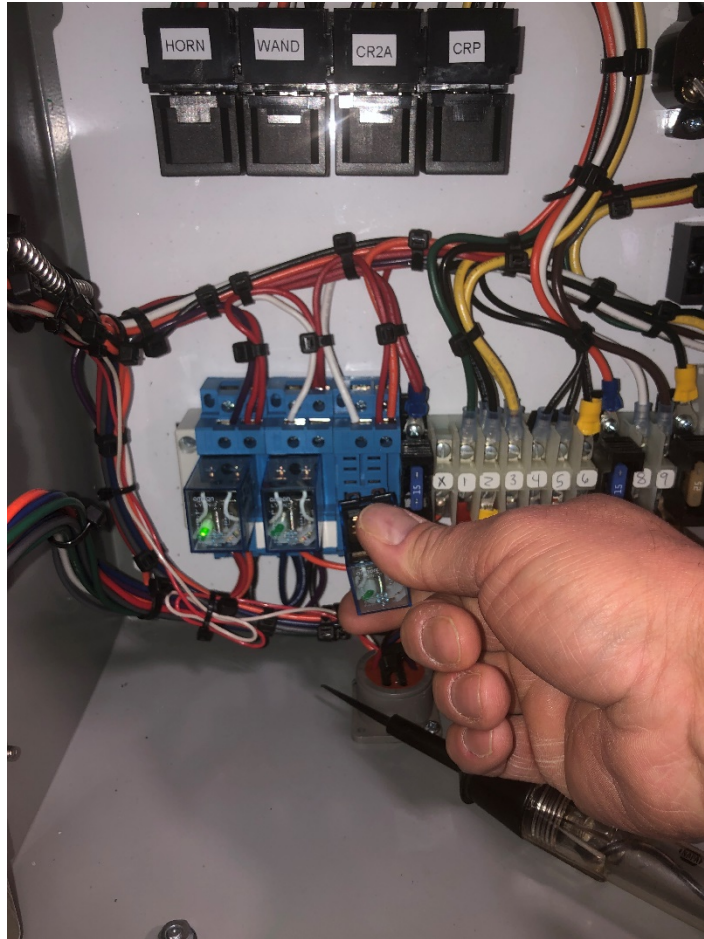
## Temperature controller replacement:

1. Remove all of the wires from the terminals. Note: Take a picture of the wiring configuration before removal for reinstall efficiency.
2. Lift and pull the tabs on the top and bottom of the temperature controller.
3. Pull the controller out through the front of the door.
4. Reinstall the new controller in reverse order.



## CR3 Relay Replacement:

Pull the CR3 relay from its socket and replace it with a new relay.



## Pressure Compensator Valve Replacement:

1. The Pressure Compensator valve is located on the back side of the Hydraulic manifold.
2. Shut off the main hydraulic valve at the hydraulic tank.
3. Use a wrench to loosen the valve, unscrew it, and replace it with a new valve.
4. There will be some hydraulic fluid leakage but that can be minimized by installing the new valve in place quickly.



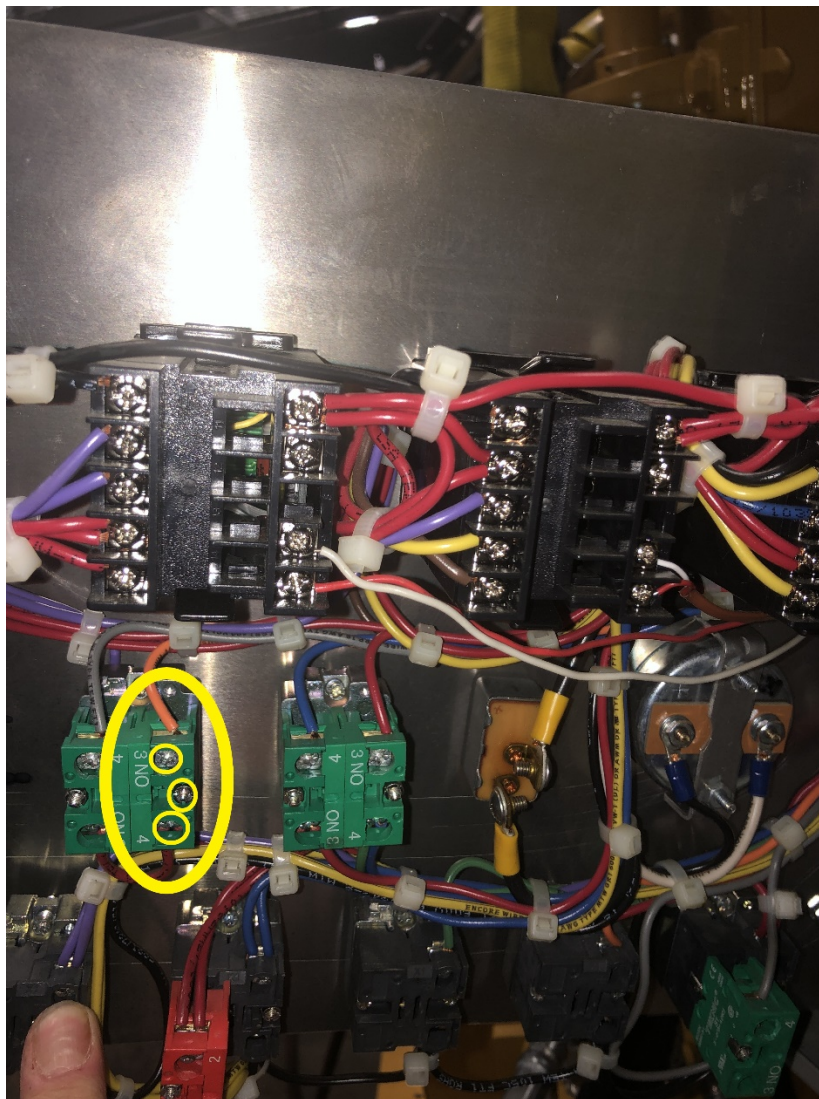
## Hydraulic Manifold Solenoid Replacement (Agitator Forward):

1. Remove poly loom to expose the wiring of solenoid you will be replacing.
2. Cut the wires. With a  $\frac{3}{4}$ " wrench or socket, loosen the nut at the end of the solenoid cartridge.
3. Remove the bad solenoid and put the new solenoid in the same position the bad solenoid was in.
4. Reinstall the nut to the end of the solenoid cartridge.
5. Butt connect the wires to the wires cut earlier. Which wire doesn't matter, one is ground and one is power.



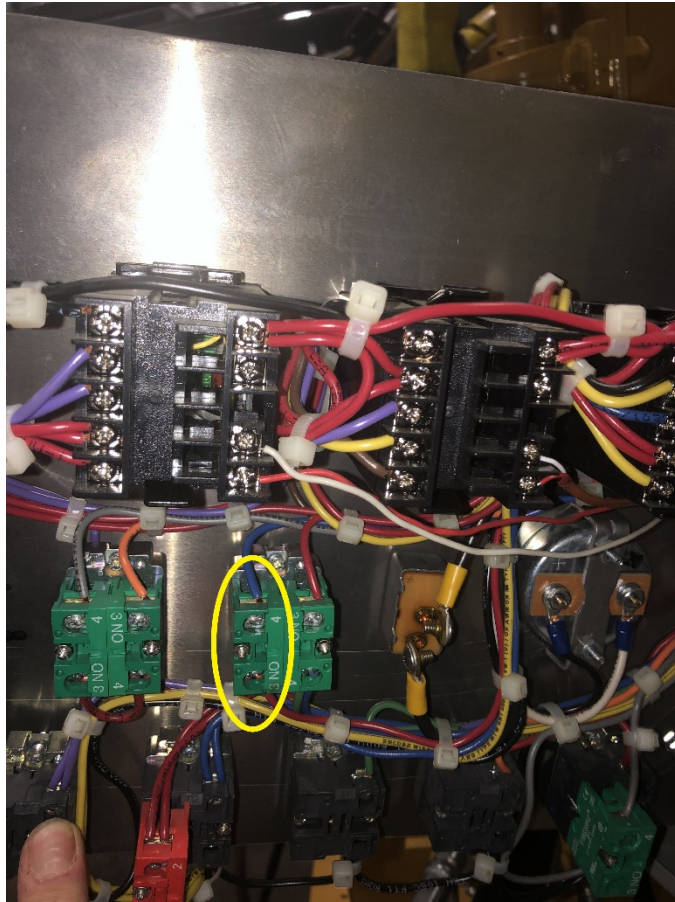
## Agitator Forward Contact Replacement

1. Loosen The top and bottom screws and remove the wires from the green contact block.
2. Loosen the center screw to remove the contact block.
3. Install the new contact block in reverse order of removal.



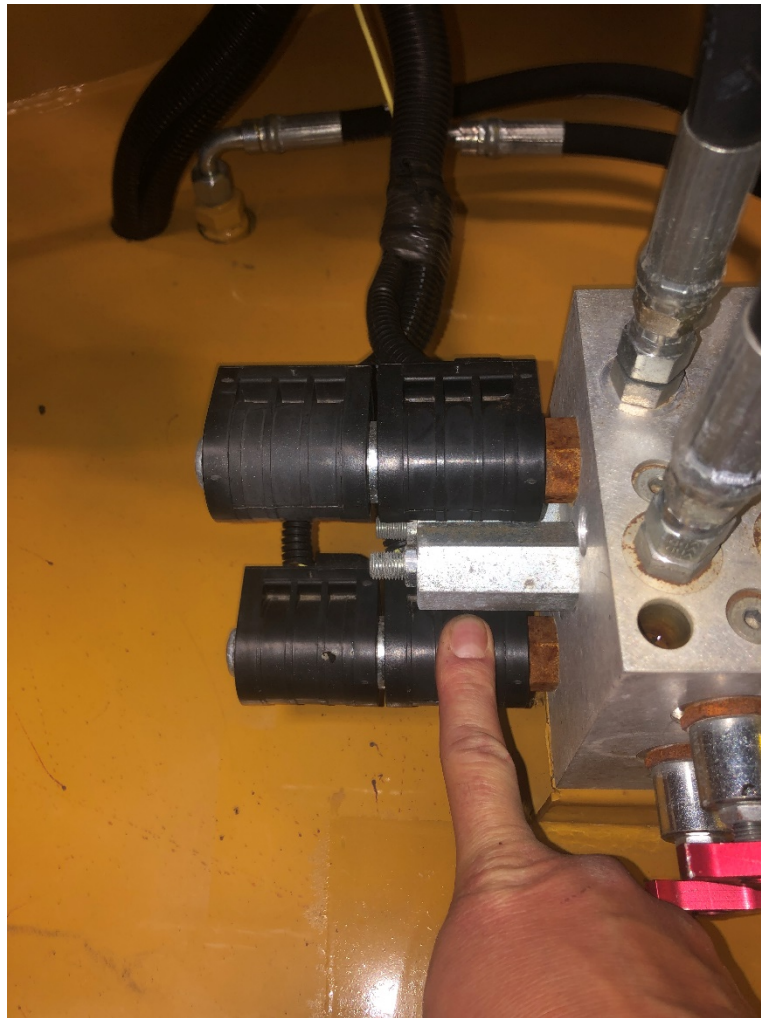
## Pump Reverse Contact Block Replacement

1. Loosen The top and bottom screws and remove the wires from the green contact block.
2. Loosen the center screw to remove the contact block.
3. Install the new contact block in reverse order of removal.



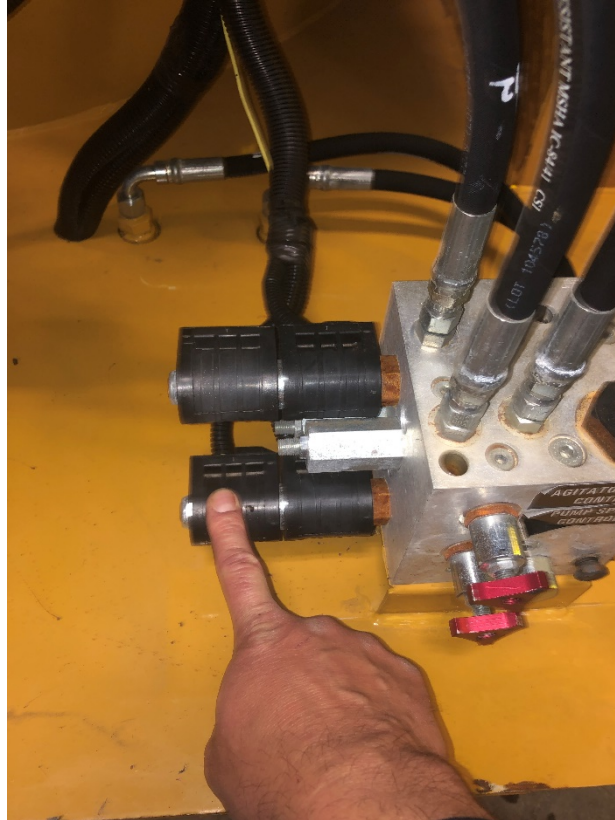
## Hydraulic Manifold Solenoid Replacement (Pump reverse):

1. Remove poly loom to expose the wiring of solenoid you will be replacing.
2. Cut the wires. With a  $\frac{3}{4}$ " wrench or socket, loosen the nut at the end of the solenoid cartridge.
3. Remove the bad solenoid and put the new solenoid in the same position the bad solenoid was in.
4. Reinstall the nut to the end of the solenoid cartridge.
5. Butt connect the wires to the wires cut earlier. Which wire doesn't matter, one is ground and one is power.



## Hydraulic Manifold Solenoid Replacement (Pump Forward):

1. Remove poly loom to expose the wiring of solenoid you will be replacing.
2. Cut the wires. With a  $\frac{3}{4}$ " wrench or socket, loosen the nut at the end of the solenoid cartridge.
3. Remove the bad solenoid and put the new solenoid in the same position the bad solenoid was in.
4. Reinstall the nut to the end of the solenoid cartridge.
5. Butt connect the wires to the wires cut earlier. Which wire doesn't matter, one is ground and one is power.





## Pump Forward Contact Block Replacement

1. Loosen The top and bottom screws and remove the wires from the green contact block.
2. Loosen the center screw to remove the contact block.
3. Install the new contact block in reverse order of removal.

