



## SP 575 DUAL SPRAY / SQUEEGEE MACHINE

A 575-GALLON CAPACITY MACHINE THAT DOES IT ALL - SPRAY BAR, SPRAY WAND, AND SQUEEGEE APPLICATION

**DESIGNED TO MIX AND APPLY PAVEMENT SEALERS WITH OR WITHOUT SAND**

### SP 575 Dual Features:

- Round tank design with true, full-sweep agitation and rubber wiper blades
- SandPumper II 2" material pump. Shifts to neutral when wand or spray bar is shut off
- Quick change floating squeegee assembly with rear-angling squeegee (windrow feature) and front box squeegee
- All wheel drive for added traction and easier trailer loading
- Spray bar, spray wand
- Power steering for ease of maneuvering
- Easy-open, butterfly sealer discharge valves
- Emergency brake

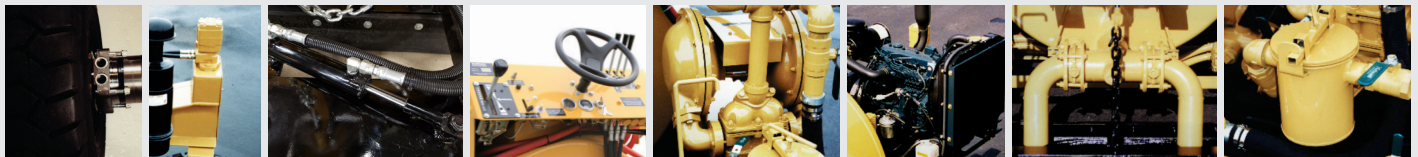
### SPECIFICATIONS:

Height .....	74"
Width .....	65"
Length .....	14'
Wheel Base .....	60"
Squeegee width .....	93"
Weight .....	4,760 lbs.
Material Tank Capacity .....	575 gallons
Water Tank Capacity Option .....	28 gallons
Engine .....	49 HP Kubota gasoline (brand subject to change)

PRODUCT #	DESCRIPTION	WEIGHT
E1005	SP 575 Dual	4,760 lbs.
E9000	Blocking / Bracing Charge	400 lbs.
<b>Options:</b>		
P50402	28 Gallon Water System	
P50246D	Hydraulically Activated Spray Bar	

\* Call for pricing

### STANDARD FEATURES:



Rear Wheel Direct-Drive

Power Steering

Hydraulic Shift for Angling the Squeegee

User-Friendly Control Panel

Hydraulically Driven Dual Diaphragm Material Pump

Gasoline Engine Standard

Dual Easy-Open Butterfly Sealer Discharge Valves

1-Gallon Basket Strainer Reduces Tip Clogging