



Shown with water option

SP 300 SQUEEGEE MACHINE

THE "WORKHORSE" OF SQUEEGEE MACHINES WITH A 320 GALLON CAPACITY

DESIGNED TO MIX AND APPLY PAVEMENT SEALERS WITH OR WITHOUT SAND

SP 300 Features:

- Round tank design with true full-sweep agitation and rubber wiper blades
- Quick change floating squeegee assembly with rear-angling squeegee (windrow feature) and front box squeegee
- Rear wheel drive for added traction and easier trailer loading
- Power steering for ease of maneuvering
- Easy-open, butterfly sealer discharge valves
- Diesel engine optional [21.6 HP Kubota]
- Emergency brake



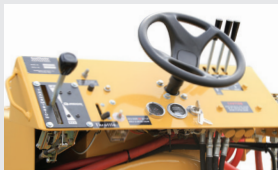
PRODUCT #	DESCRIPTION	WEIGHT
E1020	SP 300	3,320 lbs.
E9000	Blocking / Bracing Charge	400 lbs.
Options:		
P50335	Diesel Engine	
P50402	28 Gallon Water System	

* Call for pricing

SPECIFICATIONS:

Height	65"
Width.....	63"
Length.....	140"
Wheel Base.....	60"
Squeegee width.....	93"
Weight.....	3,320 lbs.
Material Tank Capacity.....	320 gallons
Water Tank Capacity Option	28 gallons
Engine.....	CH730 Kohler

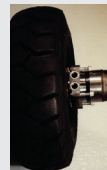
STANDARD FEATURES:



User-Friendly Control Panel



Hydraulic Shift for Angling the Squeegee



Rear Wheel Direct-Drive



Power Steering



Dual Easy-Open Butterfly Sealer Discharge Valves