

COLORPAVE® HD CLEAR COAT

ENHANCES AND PROTECTS YOUR
COLORPAVE SURFACE

ColorPave HD Clear Coat is a 100% acrylic, clear drying emulsion specifically formulated as a protective top coat for ColorPave HD color coatings. It provides additional protection against ultra-violet rays, moisture, oil, gas, and chemical attack. ColorPave HD Clear Coat helps extend the service life of ColorPave HD color coatings. Clear Coat HD can be applied by spray, brush, or roller.



| PRODUCT # | DESCRIPTION | WEIGHT | PRICE |
|-----------|-----------------|---------|----------|
| S2300P | 5 - Gallon Pail | 46 lbs. | \$189.99 |

MIXING PROCEDURES:

Use as is. Do not dilute.

MATERIAL REQUIREMENTS (coverage): One gallon will cover approximately 200 square feet [22 square yards] per coat.

One 5 gallon pail will cover approximately 1,000 square feet [110 square yards] per coat.

COLORPAVE® HD 500

IDEAL FOR COATING IMPRINTED
ASPHALT SURFACES

ColorPave HD 500 is supplied as a Neutral Base designed to be mixed with ColorPlus Pigment Dispersion to achieve desired color. Pails contain 4.5 gallons of material to allow room for adding and mixing ColorPlus Tint. Add 1 ColorPlus Tint [24 oz] to one pail of ColorPave HD 500.

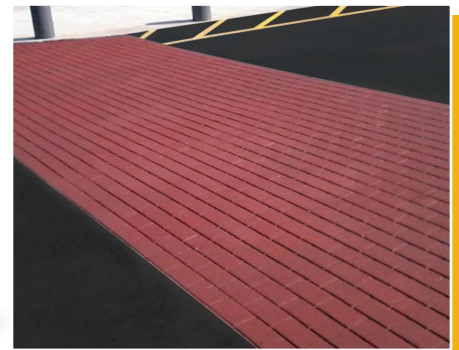
IMPORTANT: Do not apply to pavement surfaces that have previously been sealed with coal tar or asphalt based sealers.

Features:

- Unique cross-linking technology provides high durability
- Fortified with sand for slip-resistance and durability
- Fast drying formula
- Designed for spray application [Due to Colorpave HD's unique fast drying technology, squeegee application is not recommended]

NOTE: ColorPave HD 500 is designed to be sprayed with any suitable texture coating spray unit.

[See page 14 for colors and pricing].



| PRODUCT # | DESCRIPTION | WEIGHT | PRICE |
|-----------|------------------------------------|---------|----------|
| S2200P | 5 - Gallon Pail [4.5 - Gallon Net] | 70 lbs. | \$161.99 |

MIXING PROCEDURES:

ColorPave HD 500 1 pail
ColorPlus Tint [24 oz] 1

NOTE: If needed, a small amount of water may be added to facilitate application.

MATERIAL REQUIREMENTS (coverage): One gallon will cover approximately 60 - 70 square feet [6.7 to 7.8 square yards] per coat. Two coats are recommended for optimum performance.

NOTE: Actual coverage rates will vary due to differences in pavement porosity.



**TEXTURE
SPRAY UNIT**

AVAILABLE ON PAGE 57